



Advanced Lubricants Technology

## PETROL CLEANER ECP + OCTANE BOOSTER

**PETROL CLEANER ECP + OCTANE BOOSTER** is a multifunctional gasoline performance Cleaner + Booster that is designed to enhance the performance of gasoline engines.

It is effective in all type of fuel injection systems. **PETROL CLEANER ECP + OCTANE BOOSTER** is completely soluble in gasoline and gasoline ethanol blend and is compatible with commonly used engine and fuel systems materials.

**PETROL CLEANER ECP + OCTANE BOOSTER** and its unique detergent system controls and removes the deposits on injectors and intake valves to improve driveability, increase fuel economy, and reduce exhaust emissions.

**PETROL CLEANER ECP + OCTANE BOOSTER** also provides protection against corrosion and emulsion or haze in wet fuel systems. Further, **PETROL CLEANER ECP + OCTANE BOOSTER** can improve gasoline engine combustion efficiency and reduce wear coefficient along metal-metal surfaces inside engines resulting in increased efficiencies and longer parts life.

### **BENEFITS**

Real Life Fuel Economy  
Cleaner Engine  
Corrosion Control  
Reduced Engine Wear  
Enhanced Combustion  
Less Harmful Emissions

### **APPLICATION**

Dosage rates vary based on desired performance need. Please consult with your sale representative about suggested treatment plans.

### **HANDLING**

Please refer to the Safety Data Sheet for handling, safety and toxicity information.

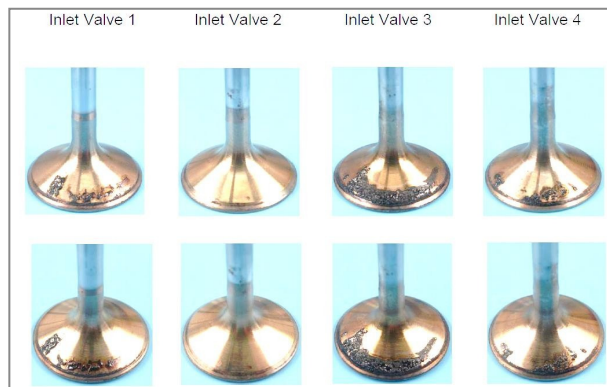
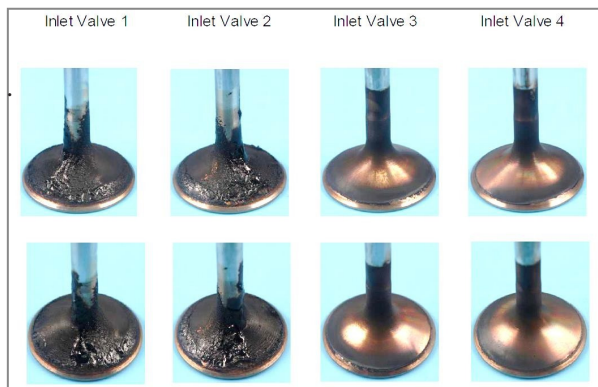
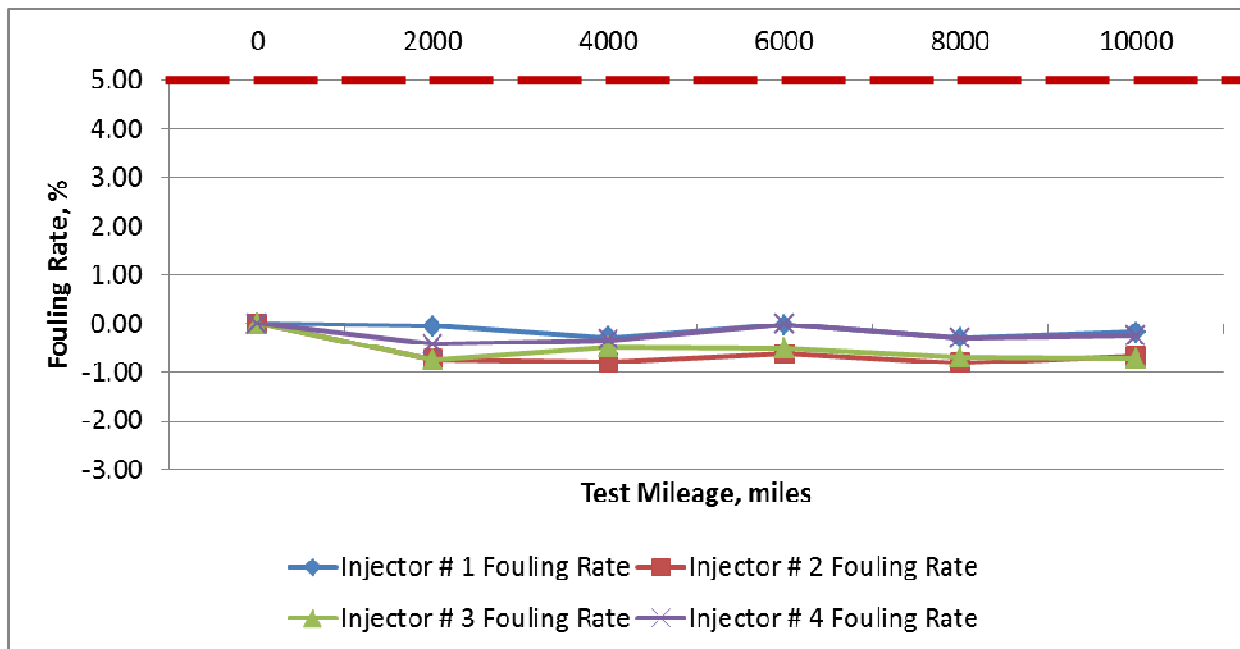
### **STORAGE**

Store the product in a dry, well-ventilated place, preferably without direct exposure to sunlight. Do not store the product with food and drink.

### **TYPICAL CHARACTERISTICS**

Appearance	Amber Liquid	Kinematic Viscosity @40°C, cst	2.5 max
Specific Gravity @ 15.6°C	0.79-0.86	Kinematic Viscosity @20°C, cst	5.0 max
Flash Point, °C	27 min	Max. Handling Temperature	Ambient Temperature

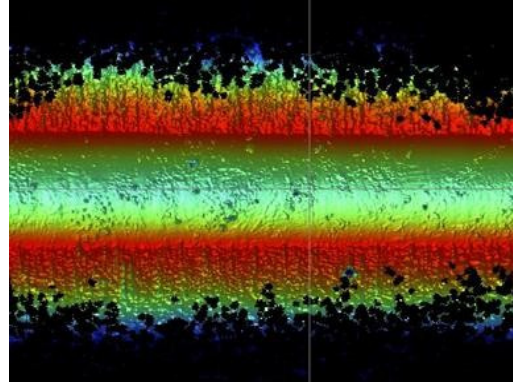
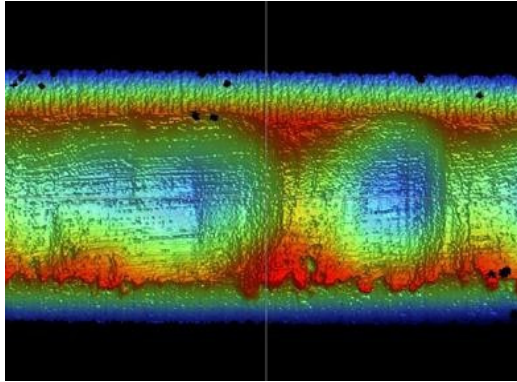
## PortFuelInjectorDepositKeepCleanTest(ASTMD5598)



Left is 100% Gasoline

Right is + Petrol Cleaner ECP + Booster

## TE-77 Wear Test Images



Left is 100% Gasoline

Right is + Petrol Cleaner ECP + Booster

## Corrosion Test Rating

Rating	Percent of Test Surface Corroded
A	0
B++	Less than 0.1 (2 or 3 spots of no more than 1-mm [0.04-in.] diameter)
B+	Less than 5
B	5 to 25
C	25 to 50
D	50 to 75
E	75 to 100



- ASTM D665A/NACE Rating
- Duplicate Test (2 rods)
- Pass means no rust for both rods
- Fail means rusting on both rods